

LIFTING MAGNETS

PERMANENT HOIST MAGNETS FOR LIFTING IRON CASTINGS,
PLATE & SHEET STEEL, ETC.



MODEL 350



MODEL 750



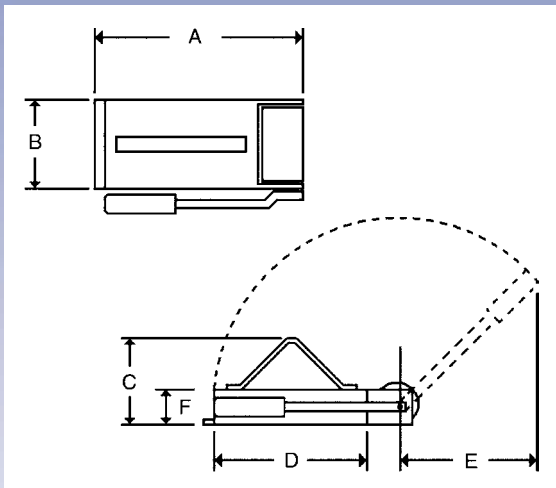
MODEL 1037JR



MODEL 1037



MODEL 1057



Our permanent Hoist Magnets eliminate the hassle of electric cords or awkward slings. Proven safe and reliable for over 30 years, they can't fail due to power fluctuations. After 100 years, the magnets will still be over 99.5% strong! All include a hand release lever and are ruggedly built with stainless steel casings and a multi-pole design. They can also be used in tandem with a spreader bar for lifting larger loads. The magnets are heat resistant so they're perfect for use with burning tables and welding setups.

**Lift capacity calculated on 1" ground steel surface. Capacity provides a 2:1 safety factor.*

OTHER MODELS AVAILABLE ON SPECIAL ORDER, SUCH AS THE HEAVY-DUTY VERSIONS

Model	A	B	C	D	E	F	Weight	Capacity
1057	16-1/4"	6-3/8"	6-1/4"	12-5/8"	14-1/2"	2-1/2"	47 Lbs .	2500 Lbs . *
1037	13-7/8"	6-3/8"	5"	10-7/8"	12"	1-5/8"	27 Lbs .	1500 Lbs . *
1037Jr	9-1/2"	6-1/2"	3-3/8"	6-1/2"	9"	1-5/8"	17 Lbs .	1000 Lbs . *
750	8-1/2"	5-3/8"	3-3/8"	5-3/8"	8-1/2"	1-5/8"	13 Lbs .	600 Lbs . *
350	9-1/2"	3-3/4"	3-3/8"	6-1/4"	9"	1-5/8"	11 Lbs .	400 Lbs . *

WEBSITE:
WWW.MAGNETIZED.COM



EMAIL:
SALES@MAGNETIZED.COM